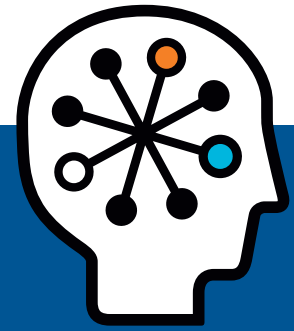




HP ProLiant DL380 G5 Storage Server

Data sheet



Add file and print services to your network quickly and easily or boost the ROI of your SAN or array by enabling file, iSCSI, and management services.

You have better things to do than worry about file storage. You're juggling multiple interfaces, security concerns, and shrinking backup windows—all while your users demand more storage space. You need scalable file storage that's powerful and easy to manage, and you need it soon.

HP ProLiant DL380 G5 Storage Server is the fast and easy way to add high-performance networked file storage to your enterprise or workgroup IT environment, or to add file and iSCSI services to your SAN. The Microsoft® Windows®-powered operating system is pre-installed, so you're up and serving files in minutes. Support for multiple protocols enables you to consolidate to a centralized network attached storage (NAS) solution or to create a backup/replication target. A single storage solution to manage, scale, and secure helps you spend less time and effort on maintenance and management, and industry-standard

building blocks protect your investment by providing compatibility with your network and applications.

Key features and benefits

Ready to Deploy

- **Be up and serving files in minutes, not hours:** The operating system is pre-installed and user storage is pre-configured, so it's a quick, easy, and more secure way to add file storage to your network
- **A single, centralized file server:** Consolidate islands of direct-attached storage to one platform or create a scalable disk-based backup or replication target
- **Multiple models to fit your needs:** The Base model is ready for enclosure expansion, the 1.16 TB SAS model gets you started with internal storage, 6-drive MSA60 bundles get you started with external storage, and the SAN Gateway model boosts the value of your SAN/array investment by adding data services to it

- **Add file access or tier block access to your SAN:** The SAN Gateway model is a file/iSCSI gateway into a SAN or array, creating IP-based access to consolidated storage. In addition to enabling file services, it can help tier block access using inexpensive Ethernet infrastructure, and can host Windows-based storage management applications

Windows-powered Network Attached Storage (NAS)

- **Multi-protocol file serving:** Install in wide range of heterogeneous file serving environments with support for SMB/CIFS, NFS, HTTP, FTP, WebDAV, AppleTalk, and NetWare protocols
- **Spend less time and effort managing files:** A consolidated and networked solution means you have one thing to manage, scale, and protect.
- **Familiar management look and feel:** If you've used Microsoft Management Console (MMC) to manage a Windows server, you're probably already familiar with how to manage a ProLiant Storage Server

Industry-standard Hardware and Software

- **HP ProLiant server hardware:** Relax—your investment is protected because you're not locked into a proprietary platform. And you can take advantage of built-in functionality like Integrated Lights-out 2 (iLO2) that lets you manage and troubleshoot remotely.
- **Seamless integration into your environment:** It's running Windows, so it integrates natively into your Active Directory and DFS environments, and runs your favorite antivirus, backup, and storage management applications
- **High-performance platform:** The scalable 2U rack mount platform supports up to 2 quad-core processors, up to 8 internal SFF drives, easy external expansion, and redundant power and cooling.

Intelligent storage management features

- **Optimized for file serving:** Up to 20% faster file serving performance than a Windows Server 2003 R2 installation
- **Get more space using file de-duplication:** Single Instance Storage (SIS) recovers up to 35% of disk space by reducing the amount of redundant data
- **Storage-specific tools and features included:** Reap the benefits of optimized Indexed Search, SharePoint® Services support, Quotas, File Screening, Storage Reporting, Volume Shadow Copy Service (VSS) snapshots, and Distributed File System (DFS) Replication—all at no extra charge

- **Print server support:** Don't forget that a DL380 G5 Storage Server is a Windows print server too, offering consolidation benefits to your Windows print environment
- **Microsoft iSCSI Software Target support:** Lower your total cost of ownership even more by hosting application (block) storage on your storage server. The Gateway model features the Microsoft Windows Unified Data Storage Server 2003 O/S (which includes iSCSI software target), while other models can be upgraded with optional software

Warranty

HP warrants that the software media will be free of physical defects for a period of ninety (90) days from delivery.

HP Services

When you buy a HP StorageWorks DL380 G5 storage solution, it's also a good time to think about what level of service and support you may need. To help take the worry out of deploying and managing your environment, we've designed a portfolio of service options that are as flexible, scalable, and affordable as your storage.

Recommended Services

- **3-year Support Plus 24 Service:** Provides integrated hardware and software support services designed specifically for your technology. HP Services engineers deliver reactive onsite hardware support and over-the-phone software support around-the-clock
- **HP Network Attached Storage (NAS) Installation and Startup Service:** Provides deployment of your HP ProLiant Storage Server while helping you establish readily available access to and management of your critical data and applications

Related Services

- **3-year HP Proactive24:** HP Proactive 24 Service (P24) is an integrated hardware and software support solution, which combines industry leading technical assistance with proactive account services to cover the entire IT infrastructure and to improve the stability, availability, and operational effectiveness of the IT environment
- **HP Backup and Recovery Solution Service:** Helping you to design an architecture that meets your requirements, HP will deploy your backup software, validate your configuration, and integrate the software into your existing or new storage infrastructure.

For more information about HP services and support, contact your HP sales representative or HP-authorized Channel Partner or, visit

HP ProLiant DL380 G5 Storage Server



Processor(s)	Quad-Core Intel® Xeon® E5430 (2.66 GHz, 80 Watts, 1333 FSB)
Processor cache	12MB (2 x 6MB) Level 2
Number of processors (Standard/Installed)	1 (all models except SAN Gateway) 2 (SAN Gateway)
Maximum number of processors	2
Standard memory	4GB (all models except SAN Gateway) 8GB (SAN Gateway)
Maximum memory	32GB (all models except SAN Gateway) 64GB (SAN Gateway)
Memory type	PC2-5300 with Advanced ECC
Maximum storage capacity (Raw)	97TB (8 x 146GB SFF SAS int. + 96 x 1TB LFF SATA ext.)
Remote management	Telnet; Remote Desktop; Microsoft Management Console (MMC)-based interface accessible through HTTPS; iLO2
Maximum raw capacity per drive type	SAS Up to 1.16TB raw internal capacity SATA Up to 96TB raw external capacity SAS Up to 43.2TB raw external capacity
External expansion support	MSA50, MSA60, MSA70
Network adapter	Dual embedded NC373i Multifunction Gigabit Server Adapters with TCP/IP Offload Engine
Storage controller	Smart Array P800/512 MB with BBWC (all models except SAN Gateway); Smart Array P400/512 MB with BBWC (SAN Gateway)
Expansion slots	Two embedded PCIe slots (one occupied by SA P400 on SAN Gateway); PCIe Riser adds 3 PCIe slots (one occupied by SA P800 on all models except SAN Gateway)
Supported operating systems	Microsoft Windows Storage Server 2003 Release 2 Standard x64 Edition, Base, 1.16TB SAS, 4.5TB SATA, 6TB SATA, 1.8TB SAS, and 2.7TB SAS models Microsoft Windows Unified Data Storage Server 2003 Enterprise x64 Edition, SAN Gateway
Optical drive	Slimline DVD-ROM Drive (8x/24x)
Redundant power supply	Standard
Redundant fan	Standard
Number of users (starting)	200
Number of users (maximum)	1,000+
Form factor	2U
Warranty (abbreviated description)	3 years parts, 3 years labor, 3 years on-site support (next business day response) plus 1 year software support

Service and Support

Factory Express

HP Factory Express is designed to help you get a better return from your IT investment by providing customization, integration, and deployment services along with your storage and server purchases. It provides predictable, trusted, and tested IT solutions tailored to your business needs. We allow you to customize hardware to your exact specifications in the factory—helping to speed up deployment and free up internal resources.

Customer Technical Training

Consider education as an integral part of your strategy to get the best return on investment for your HP storage solution. HP offers a variety of training courses on

storage software, networking, archiving, and disk storage systems. Our classes are available in many delivery modalities from traditional instructor-led courses at one of our 80 training centers worldwide to on-site training customized to your needs or online.

Financial Services

HP Financial Services provides innovative financing and financial asset management programs to help customers cost-effectively acquire, manage, and ultimately retire their HP solutions.

Technology for better business outcomes

© 2008 Hewlett-Packard Development Company, L.P. The information contained herein is subject to change without notice. The only warranties for HP products and services are set forth in the express warranty statements accompanying such products and services. Nothing herein should be construed as constituting an additional warranty. HP shall not be liable for technical or editorial errors or omissions contained herein.

Microsoft and Windows are trademarks of Microsoft Corporation in the U.S. and/or other countries. Intel and Xeon are a trademark or registered trademark of Intel Corporation or its subsidiaries in the United States and other countries. UNIX is a registered trademark of The Open Group.

For more information, call CDCE at 800-373-5353 or email sales@cdce.com

5982-8715EN Rev. 6, August 2008

